

IMPORTANT SAFETY AND INSTALLATION INSTRUCTIONS

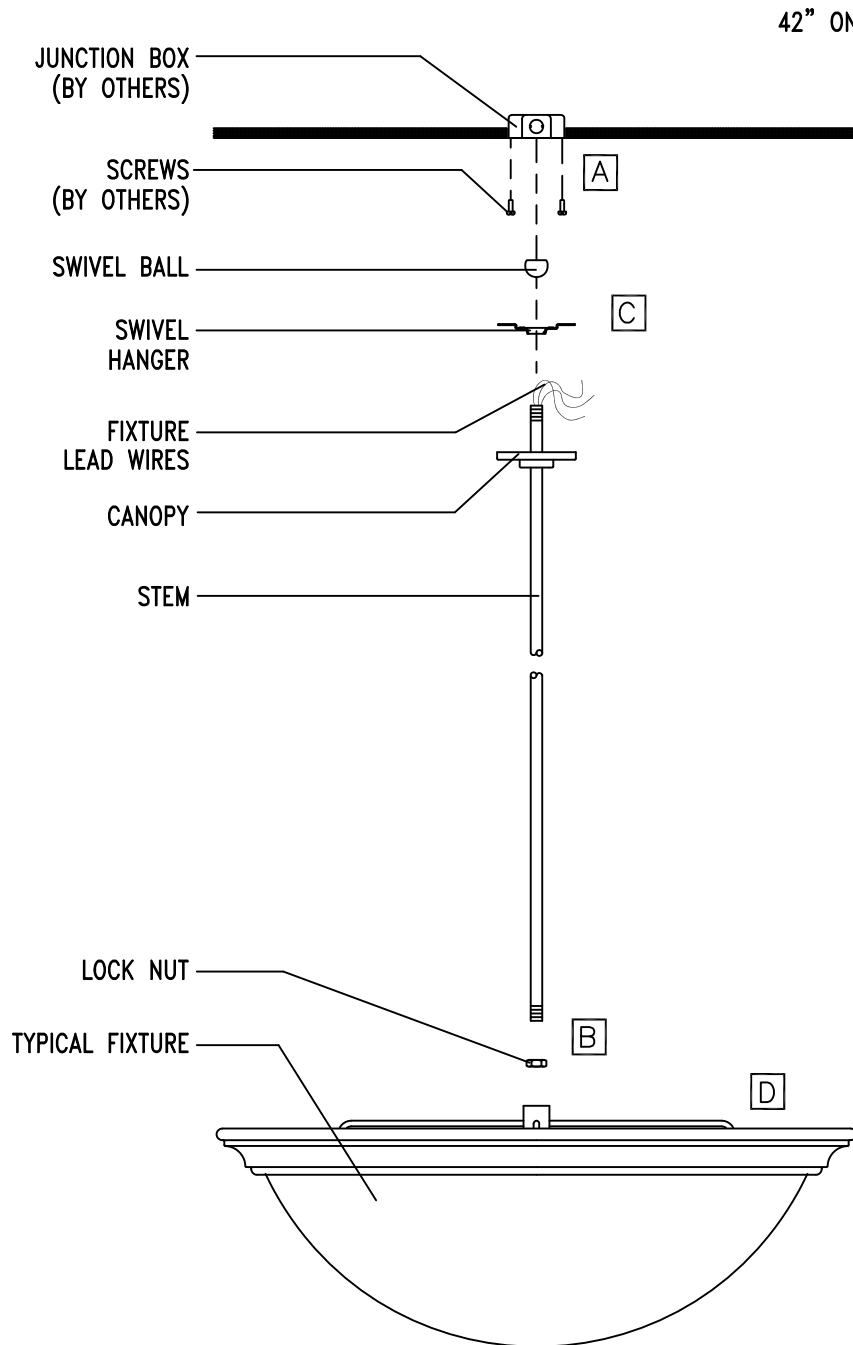
WARNING: Risk of fire and electric shock. This product is to be installed by a qualified electrician only.

CAUTION: When using electrical equipment, basic safety precautions should always be followed including the following: Read all instructions carefully before installation and save

for future use. Make sure installation and all connections are in accordance with National Electrical Code and any local regulations. To avoid possible electrical shock, be sure that power supply is turned off before installing or servicing this fixture. Servicing should be performed by qualified service personnel.

These instructions do not claim to cover all details or variations. When additional information is desired, please contact your SPI representative.

24"/32"/42" PENDANT



42" ONLY:

Additional support is required for 42" dia. pendant. (mtg. hardware by others) Canopy mounting bracket is supplied with (4)-.313 dia. auxiliary mounting holes on a 5" Dia.

A Assemble screws (by others) to ears of junction box (by others). Do not tighten.

B Feed wires through stem. Tighten stem into yoke or coupler with lock nut.

YOKE ASSEMBLY

LOCK NUT

3/8" FOR 24"
5/8" FOR 32"/42"

When fixture is supplied with accessory stem kits see back page.

KS01 Column stems: feed wires through spider plate, slip ring and spider plate.

KR01 Rods: feed wires through slip ring and spider plate.

KC01 Chains: feed wires through mounting hub.

C Feed wire through these parts, assemble and thread stem into swivel ball. Twist lock swivel hanger to junction box and tighten screws.

Connect labeled lamp lead wires separately to each remote mounted ballast with wire nuts (by others).

Secure canopy by pushing upward to engage fastening device.

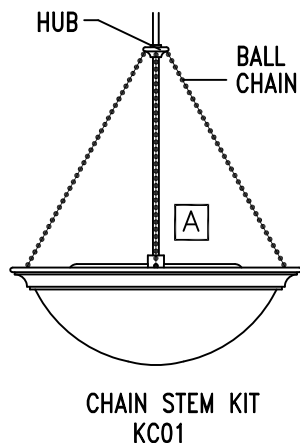
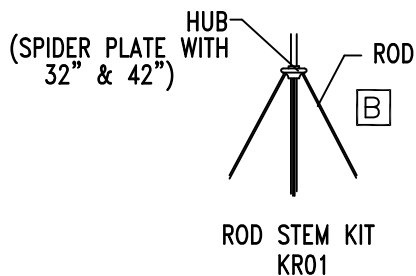
D Loosen lens retaining clips on lensed fixture. Remove glass lens. Install lamp which must be same as labeled socket and ballast. Install glass lens and re-tighten lens retainers.

LAMPING NOTE:

Prior to dimming fluorescent lamps, operate lamps under normal conditions for 100 hours to prevent premature lamp failure.

11/26/13
IS2784X-A

ACCESSORY STEM KITS



Raise and position spider plate or hub off top of fixture. See chart below for distance.

	ACCESSORY	DISTANCE
24"	KR01/KC01/KS01	19"
32"	KR01/KC01/KS01	24"
42"	KR01/KC01/KS01	31"

Secure slip ring or hub.

A BALL CHAINS:

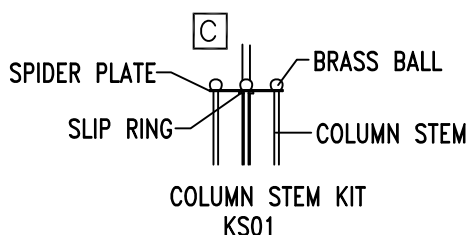
Using detachable sleeve fasten one end of each chain to hub and with detachable sleeve attach other end to spring hook on trim ring. Raise and position hub until chains are taut. Secure hub.

B RODS:

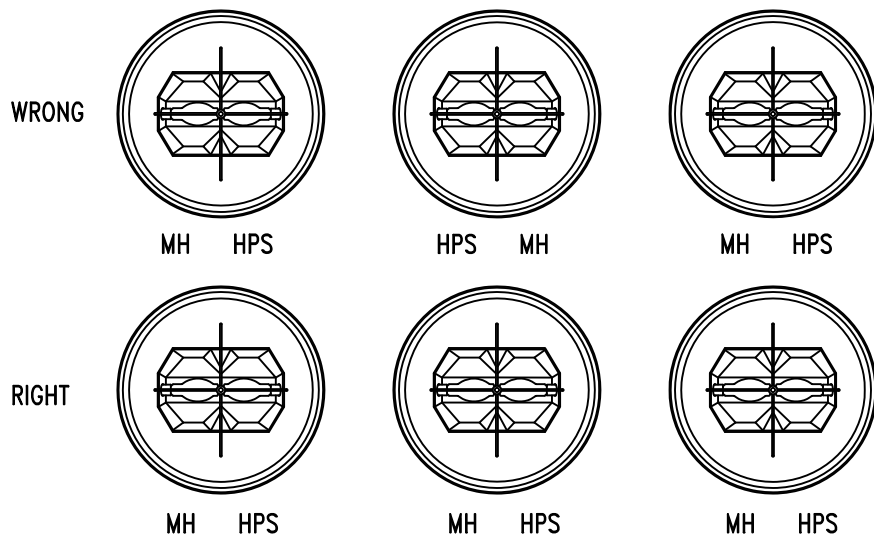
Install each rod in spring hook on trim ring and secure at hub, or spider plate with brass balls.

C COLUMN STEMS:

Hang each column stem to spider plate with brass balls. Bottom of stems insert into bottom spider plate.

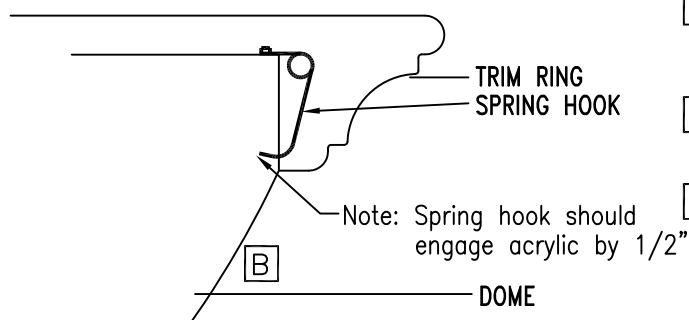


LAMP ORIENTATION (42" ONLY)



Position fixtures in orientation shown when metal halide and high pressure sodium dual lamp sources are used.

FLUORESCENT DOWNLIGHT RELAMPING (13W-42", 40W-24" AND 32")



A To remove the acrylic dome gently lift the dome, rotate 1/2" counterclockwise and lower dome from fixture.

B Relamp fluorescent(s) and clean inside of dome if needed.

C To replace acrylic dome, align the slots in the dome with the spring hooks, lift the dome into place and rotate 1/2" clockwise to secure the dome to the fixture.

11/26/13
IS2784X-B